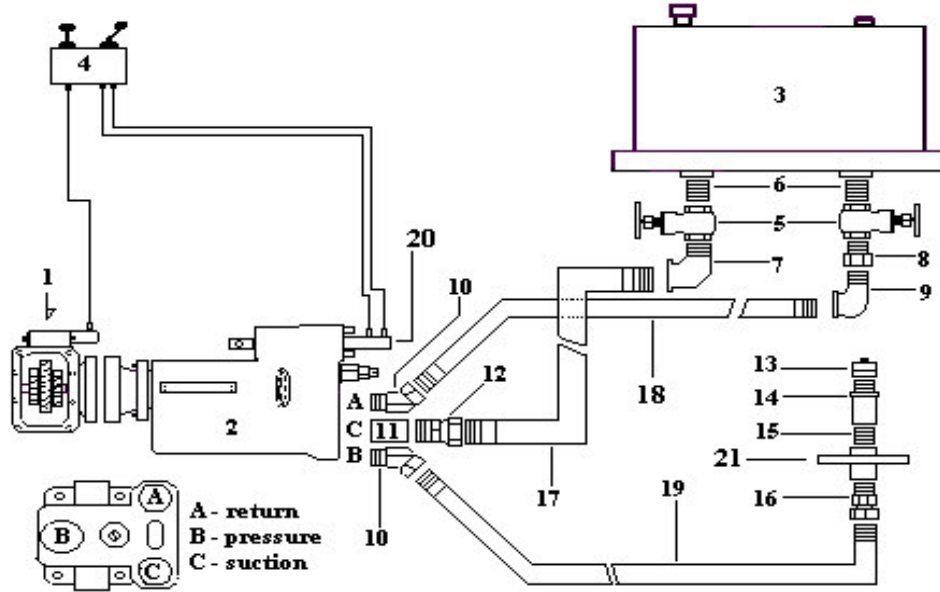


# HYDRAULIC WET KIT

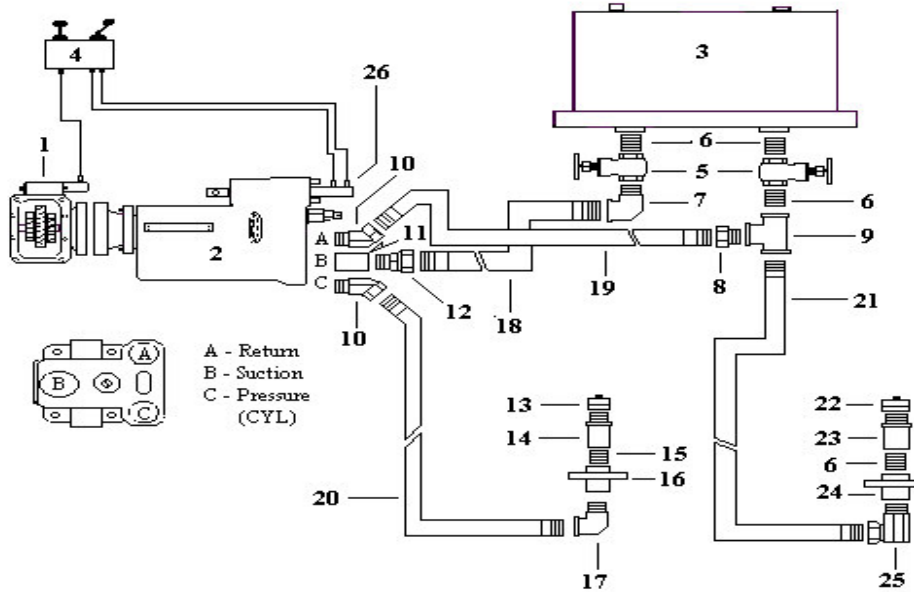
## DUMP TRAILER SINGLE LINE



Item	Part Number	Description	QTY
1		* PTO (NOTE: PER TRANSMISSION SPEC)	1
2	502-25102-03	Direct Mount Pump (Clockwise Rotation)	(1)
	502-25112-03	Direct Mount Pump (Counter-Clockwise Rotation)	(1)
3		Hydraulic Reservoir (50 / 70 gallon - Upright / Round - Aluminum / Steel)	1
4	099-30401-00	Aluminum Console (blank) (remove from kit when Combo Valve spec'ed)	1
	510-25791-13	STD Pump Shift Valve (remove from kit when Combo Valve spec'ed)	1
	510-05790-19	Pump Shift Cover Plate (remove from kit when Combo Valve spec'ed)	
5	547-05130-20	1-1/4" Gate Shut-Off Valve	2
6	547-05910-20	1-1/4" Close Pipe Nipple	2
7	547-05500-20	1-1/4" 90 degree Street Elbow	1
8	547-05112-06	1-1/4" TO 1" Reducer Bushing	1
9	547-05500-16	1-1/4" 90 degree Street Elbow	1
10	505-05007-00	1"- 45 degree Male Swivel Fitting	2
11	502-05005-03	Pump Sleeve (inserted in suction port for three line)	1
12	505-05002-00	1-1/4" Straight Male Swivel	1
13	505-05316-01	1" Dust Cap	1
14	505-05216-01	1" Male Brass Trl. Connection Fitting	1
15	547-05920-16	1" Close Pipe Nipple	1
16	505-05001-00	1" Straight Male Swivel Fitting	1
17		1-1/4" LP Hyd Hose (Lengths Vary) (suction tank to pump)	1
18		1" HP Hyd Hose (Lengths Vary) (return relief to tank)	1
19		1" HP Hyd Hose (Lengths Vary) (pump to trailer connection)	1
20	510-15006-03	Pump Air-Shift Kit	1
21	085-20011-01	1" Fitting Mounting Plate	1
	502-05009-00	Direct Mount Pump Bracket (Not Shown)	1
	510-25785-02	Feathering Combo Shift Valve (Optional) (Not Shown)	(1)
	509-05009-00	8" H TOWER (Optional) (Not Shown)	(1)

# HYDRAULIC WET KIT

## DUMP TRAILER W/ RETURN LINE



Item #	Part Number	Description	Qty
1		Power Take Off (spec'ed to transmission make & model)	1
2	502-25102-03	Hydraulic Pump Dump Type / Clockwise Rotation	(1)
	502-25112-03	Hydraulic Pump Dump Type / Counter Clockwise Rotation	(1)
3		Hydraulic Reservoir - 50 / 70 - Upright / Round - Steel / Aluminum	1
4	099-30401-00	Console Box (Note- removed from kit when feather option is used)	1
	510-25791-13	STD Pump Valve (Note: removed from kit when feather option is used)	1
	510-05790-19	Cover Plate (Note: removed from kit when feather option is used)	1
5	547-05130-20	1-1/4" Gate Shut-off Valve	2
6	547-05910-20	1-1/4" Close Pipe Nipple	3
7	547-05500-20	1-1/4" 90 degree Street Pipe Elbow	1
8	547-05112-06	1-1/4" to 1" Reducer Bushing	1
9	547-05400-20	1-1/4" Pipe Tee	1
10	505-05007-00	1" 45 degree Male Swivel Fitting	2
11	502-05005-03	Pump Insert Sleeve (inserted into suction inlet port for 3 line)	1
12	505-05002-00	1-1/4" Straight male Swivel Fitting	1
13	505-05316-01	1" Dust Cap	1
14	505-05216-01	1" Male Brass Trailer Connection Fitting	1
15	547-05910-16	1" Close Pipe Nipple	1
16	085-20011-01	1" Fitting Mounting Plate	1
17	505-05005-00	1" 90 degree Street Pipe Elbow	1
18		1-1/4" LP Hyd Hose Lengths vary (Suction Tank to Pump)	1
19		1" HP Hyd Hose Lengths Vary (Return Relief to Tank)	1
20		1" HP Hyd Hose Lengths Vary (Pump to Trailer Fitting)	1
21		1-1/4" LP Hyd Hose Lengths vary (Trailer Fitting to Tank)	1
22	505-05420-01	1-1/4" Dust Cap	1
23	505-05220-01	1-1/4" Male Brass Trailer Connection Fitting	1
24	085-20011-02	1-1/4" Fitting Mounting Plate	1
25	505-05006-00	1-1/4" 90 degree Male Swivel Fitting	1
26	510-05006-03	Pump Airshift (ASK-6 kit)	1
	502-05009-00	Direct Pump Mounting Bracket (Not Shown)	1
	510-25785-02	Feathering PTO / Pump Combo Shift Valve (Optional) (Not Shown)	(1)
	509-05009-00	8" H Console Combo Feathering Valve (Optional) (Not Shown)	(1)